

1/4/2024 5:42 PM  
z:\projects\croft\croft-llc\fbcr-23-1126-fbc-submittal-nami-update\dwg\16153\CRF016 fbc23.dwg

# CROFT, LLC

## SERIES 50W SINGLE HUNG WINDOW (NON-HVHZ)(NON-IMPACT)



1800 NORTH CLARK AVE.  
MAGNOLIA, MS 39652  
PH.: 601-684-6121 FX: 601-783-3188

**INSTALLATION NOTES:**

1. SHIM AS REQUIRED TO ACHIEVE A PLUMB AND SQUARE ISNTALLATION WITH LOAD BEARING SHIM(S). MAXIMUM ALLOWABLE SHIM STACK TO BE 1/4". SHIM WHERE SPACE OF 1/16 OR GREATER OCCURS. SHIM(S) SHALL BE CONSTRUCTED OF HIGH DENSITY PLASTIC OR BETTER.
2. ONE (1) INSTALLATION ANCHOR IS REQUIRED AT EACH ANCHOR LOCATION SHOWN, UNLESS OTHERWISE STATED.
3. THE NUMBER OF INSTALLATION ANCHORS DEPICTED IS THE MINIMUM NUMBER OF ANCHORS TO BE USED FOR PRODUCT INSTALLATION.
4. INSTALL INDIVIDUAL INSTALLATION ANCHORS WITHIN A TOLERANCE OF ±1/2 INCH OF THE DEPICTED LOCATION IN THE ANCHOR LAYOUT DETAIL (I.E., WITHOUT CONSIDERATION OF TOLERANCES). TOLERANCES ARE NOT CUMULATIVE FROM ONE INSTALLATION ANCHOR TO THE NEXT.
5. SEE ANCHOR SCHEDULE ON SHEET 2 FOR INSTALLATION ANCHOR REQUIREMENTS BASED ON INSTALLATION METHOD AND SUBSTRATE.
6. FINLESS UNITS MUST BE SET INTO A BED OF CAULK AT THE SILL WHERE NO THROUGH FRAME ANCHORS ARE USED.
7. MINIMUM EMBEDMENT AND EDGE DISTANCE EXCLUDE WALL FINISHES, INCLUDING BUT NOT LIMITED TO STUCCO, FOAM, BRICK VENEER, AND SIDING.
8. INSTALLATION ANCHORS AND ASSOCIATED HARDWARE MUST BE MADE OF CORROSION RESISTANT MATERIAL OR HAVE A CORROSION RESISTANT COATING.
9. FOR HOLLOW BLOCK AND GROUT FILLED BLOCK, DO NOT INSTALL INSTALLATION ANCHORS INTO MORTAR JOINTS. EDGE DISTANCE IS MEASURED FROM FREE EDGE OF BLOCK OR EDGE OF MORTAR JOINT INTO FACE SHELL OF BLOCK.
10. INSTALLATION ANCHORS SHALL BE INSTALLED IN ACCORDANCE WITH ANCHOR MANUFACTURER'S INSTALLATION INSTRUCTIONS, AND ANCHORS SHALL NOT BE USED IN SUBSTRATES WITH STRENGTHS LESS THAN THE MINIMUM STRENGTH SPECIFIED BY THE ANCHOR MANUFACTURER.
11. INSTALLATION ANCHOR CAPACITIES FOR PRODUCTS HEREIN ARE BASED ON SUBSTRATE MATERIALS WITH THE FOLLOWING PROPERTIES:
  - A. WOOD - MINIMUM SPECIFIC GRAVITY OF 0.55.
  - B. STEEL - MINIMUM YIELD STRENGTH OF 33 KSI. MINIMUM WALL 18 GA. WALL THICKNESS.

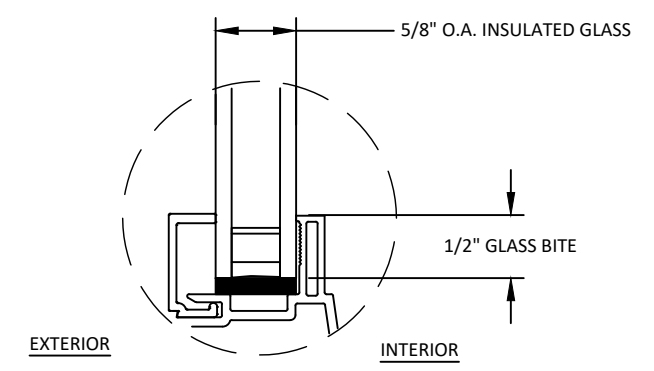
**GENERAL NOTES:**

1. THE PRODUCT SHOWN HEREIN IS DESIGNED AND MANUFACTURED TO COMPLY WITH THE CURRENT FLORIDA BUILDING CODE (FBC) EXCLUDING HVHZ AND HAS BEEN EVALUATED ACCORDING TO THE FOLLOWING:
  - AAMA/WDMA/CSA 101/I.S.2/A440-08
2. ADEQUACY OF THE EXISTING STRUCTURAL CONCRETE/MASONRY, 2X AND METAL STUD FRAMING AS A MAIN WIND FORCE RESISTING SYSTEM CAPABLE OF WITHSTANDING AND TRANSFERRING APPLIED PRODUCT LOADS TO THE FOUNDATION IS THE RESPONSIBILITY OF THE ENGINEER OR ARCHITECT OF RECORD FOR THE PROJECT OF INSTALLATION.
3. 1X AND 2X BUCKS (WHEN USED) SHALL BE DESIGNED AND ANCHORED TO PROPERLY TRANSFER ALL LOADS TO THE STRUCTURE. BUCK DESIGN AND INSTALLATION IS THE RESPONSIBILITY OF THE ENGINEER OR ARCHITECT OF RECORD FOR THE PROJECT OF INSTALLATION.
4. THE INSTALLATION DETAILS DESCRIBED HEREIN ARE GENERIC AND MAY NOT REFLECT ACTUAL CONDITIONS FOR A SPECIFIC SITE. IF SITE CONDITIONS CAUSE INSTALLATION TO DEVIATE FROM THE REQUIREMENTS DETAILED HEREIN, A LICENSED ENGINEER OR ARCHITECT SHALL PREPARE SITE SPECIFIC DOCUMENTS FOR USE WITH THIS DOCUMENT.
5. APPROVED IMPACT PROTECTIVE SYSTEM IS REQUIRED TO PROTECT THIS PRODUCT IN AREAS REQUIRING IMPACT RESISTANCE.
6. WINDOW FRAME MATERIAL: VINYL
7. GLASS SHALL MEET REQUIREMENTS OF ASTM E1300 GLASS CHARTS. SEE SHEET 1 FOR GLAZING DETAILS.
8. DESIGNATIONS "X" AND "O" STAND FOR THE FOLLOWING:
  - X. OPERABLE PANEL
  - O. FIXED PANEL

TABLE OF CONTENTS	
SHEET	SHEET DESCRIPTION
1	GENERAL, INSTALLATION NOTES & GLAZING DETAIL
2	NAIL FIN ELEVATIONS, ANCHOR SCHEDULE AND LAYOUTS
3	HORIZONTAL & VERTICAL SECTIONS

FRAME TYPE	OVERALL SIZE		DESIGN PRESSURE	MISSILE IMPACT RATING	MULL TYPE
	WIDTH	HEIGHT			
FIN	72"	72"	+35.0 /- 35.0 PSF	NON-IMPACT	INTEGRAL
FIN	48"	84"	+20.0 /- 20.0 PSF		N/A
FIN	36"	72"	+35.0 /- 35.0 PSF		
FIN	36"	72"	+50.0 /- 50.0 PSF		

NOTE: ALL CERTIFIED UNITS SHALL USE EXTRUDED ALUMINUM REINFORCEMENTS AS REQUIRED PER TESTING. DETAILS CONTAINED HEREIN MAY NOT REFLECT REQUIRED REINFORCEMENTS FOR EACH CONFIGURATION LISTED.



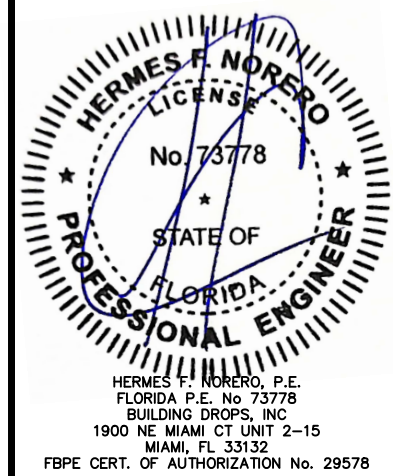
**GLAZING DETAIL**

**GLAZING NOTES:**  
GLASS THICKNESS AND TYPE SHALL COMPLY WITH ASTM E 1300 GLASS CHART REQUIREMENTS.  
ALL GLAZING CONFIGURATIONS SHALL COMPLY WITH SAFETY GLAZING REQUIREMENTS OUTLINED IN CURRENT FBC.

**TITLE:** SERIES 50W SINGLE HUNG WINDOW (NON-HVHZ) (NON-IMPACT) GENERAL, INSTALLATION NOTES & GLAZING DETAIL  
**PREPARED BY:** BUILDING DROPS, INC.  
 1900 NE MIAMI CT UNIT 2-15  
 MIAMI, FL 33132  
 PH: (954) 399-8478  
 FAX: (954) 744-4738  
 WEB: www.buildingdrops.com

REMARKS	BY	DATE
NEW CERTIFICATES	LL	8/21

THE INSTALLATION DETAILS DESCRIBED HEREIN ARE GENERIC AND MAY NOT REFLECT ACTUAL CONDITIONS FOR A SPECIFIC SITE. IF SITE CONDITIONS CAUSE INSTALLATION TO DEVIATE FROM THE REQUIREMENTS DETAILED HEREIN, A LICENSED ENGINEER OR ARCHITECT SHALL PREPARE SITE SPECIFIC DOCUMENTS FOR USE WITH THIS DOCUMENT.



HERMES F. NORERO, P.E.  
FLORIDA P.E. No. 73778  
BUILDING DROPS, INC.  
1900 NE MIAMI CT UNIT 2-15  
MIAMI, FL 33132  
FBPE CERT. OF AUTHORIZATION No. 29578

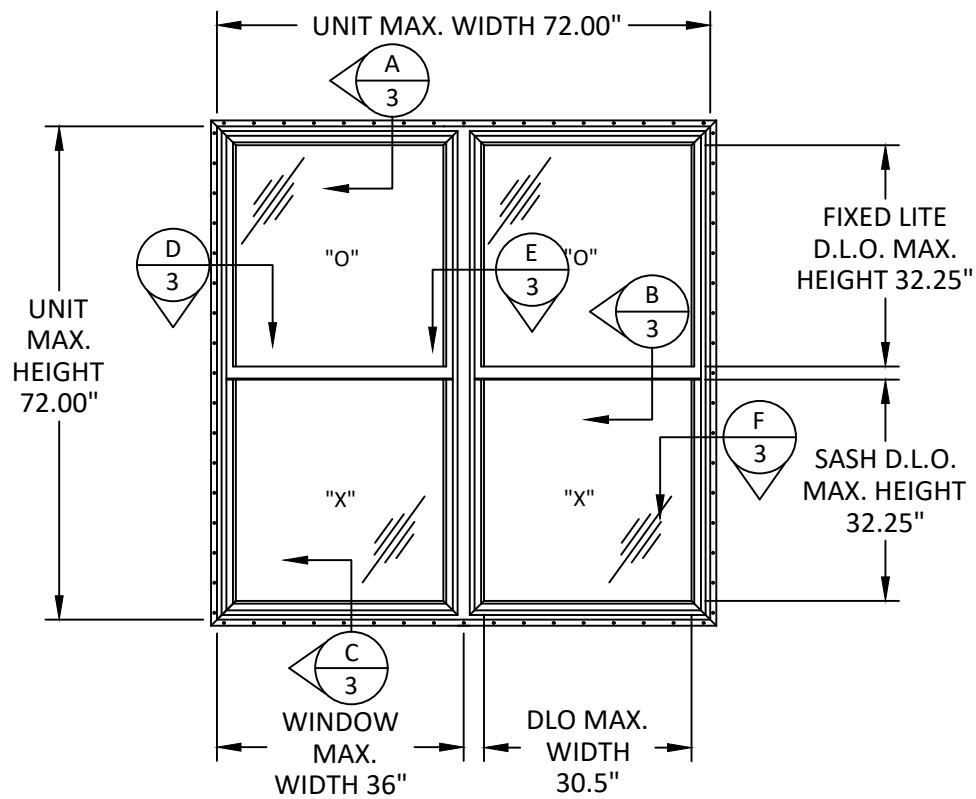
FL #: **FL16153**

DATE: **07.23.15**

DWG. BY: **BB**      CHK. BY: **HFN**

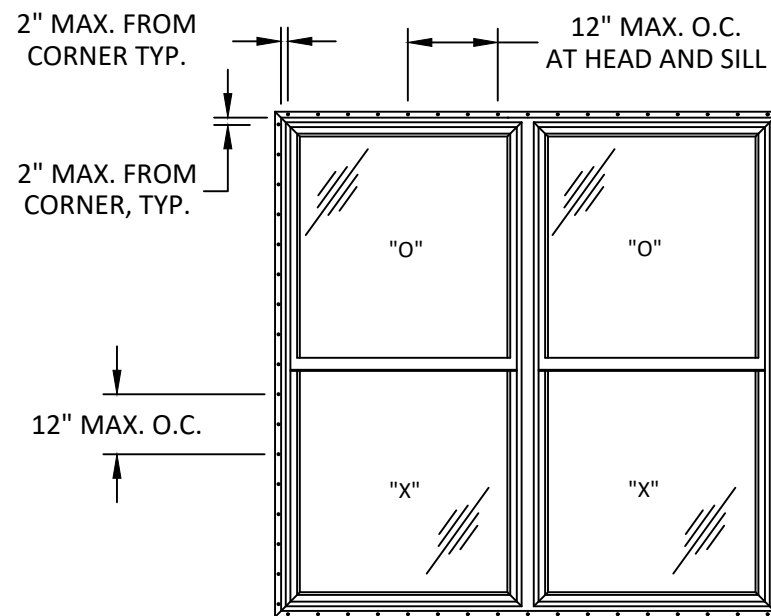
SCALE: **NTS**  
DWG. #: **CRF016**  
SHEET **1** OF 3

1/4/2024 5:42 PM  
z:\projects\crof.lic\bc-23-1126 - fbc submittal - nami update\dwg\16153\crf016 fbc23.dwg



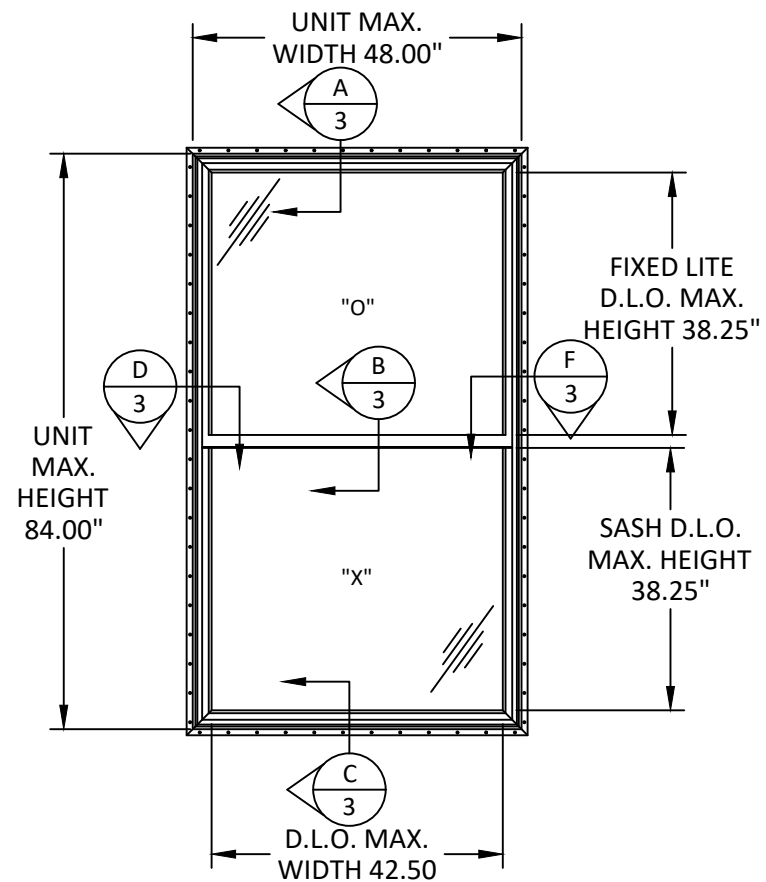
**ELEVATION**

72" x 72" FIN FRAME  
WITH INTEGRAL MULLION



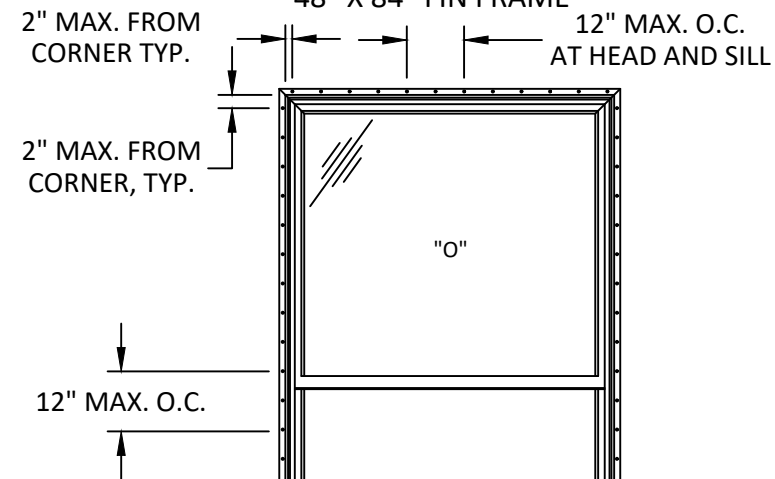
**ANCHOR LAYOUT**

72" X 72" FIN FRAME  
WITH INTEGRAL MULLION



**ELEVATION**

48" X 84" FIN FRAME



**ANCHOR LAYOUT**

48" X 84" FIN FRAME

ANCHOR SCHEDULE

METHOD	SUBSTRATE	ANCHOR	MIN. EMBEDMENT	MIN. EDGE DISTANCE
NAIL FIN	MIN. S.G. = 0.55 WOOD	#8 PAN HEAD WOOD SCREW	1.5"	0.75"
	18 GAUGE STEEL, MIN fy = 33 ksi	#8 SELF TAPPING PAN HEAD SCREW	3 THREADS PENETRATION BEYOND METAL	0.75"



1800 NORTH CLARK AVE.  
MAGNOLIA, MS 39652  
PH: 601-684-6121 FX: 601-783-3188

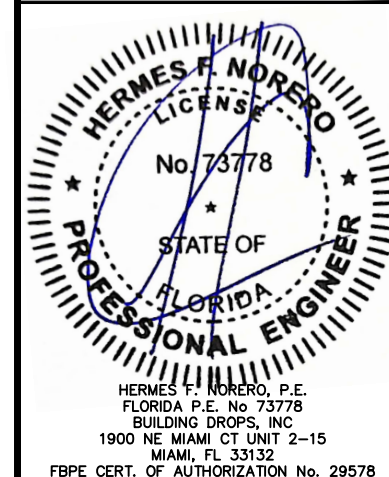
TITLE: **SERIES 50W  
SINGLE HUNG WINDOW  
(NON-HVHZ) (NON-IMPACT)  
(NON-HVHZ) (NON-IMPACT)  
NAIL FIN ELEVATIONS &  
ANCHOR SCHEDULE AND LAYOUTS**

PREPARED BY: **BUILDING DROPS, INC.**  
1900 NE MIAMI CT UNIT 2-15  
MIAMI, FL 33132  
PH: (954) 399-8478  
FAX: (954) 744-4738  
WEB: www.buildingdrops.com



REMARKS	BY	DATE
NEW CERTIFICATES	LL	8/21

THE INSTALLATION DETAILS DESCRIBED HEREIN ARE GENERIC AND MAY NOT REFLECT ACTUAL CONDITIONS FOR A SPECIFIC SITE. IF SITE CONDITIONS CAUSE INSTALLATION TO DEVIATE FROM THE REQUIREMENTS DETAILED HEREIN, A LICENSED ENGINEER OR ARCHITECT SHALL PREPARE SITE SPECIFIC DOCUMENTS FOR USE WITH THIS DOCUMENT.



FL #: **FL16153**

DATE: **07.23.15**

DWG. BY: **BB** CHK. BY: **HFN**

SCALE: **NTS**

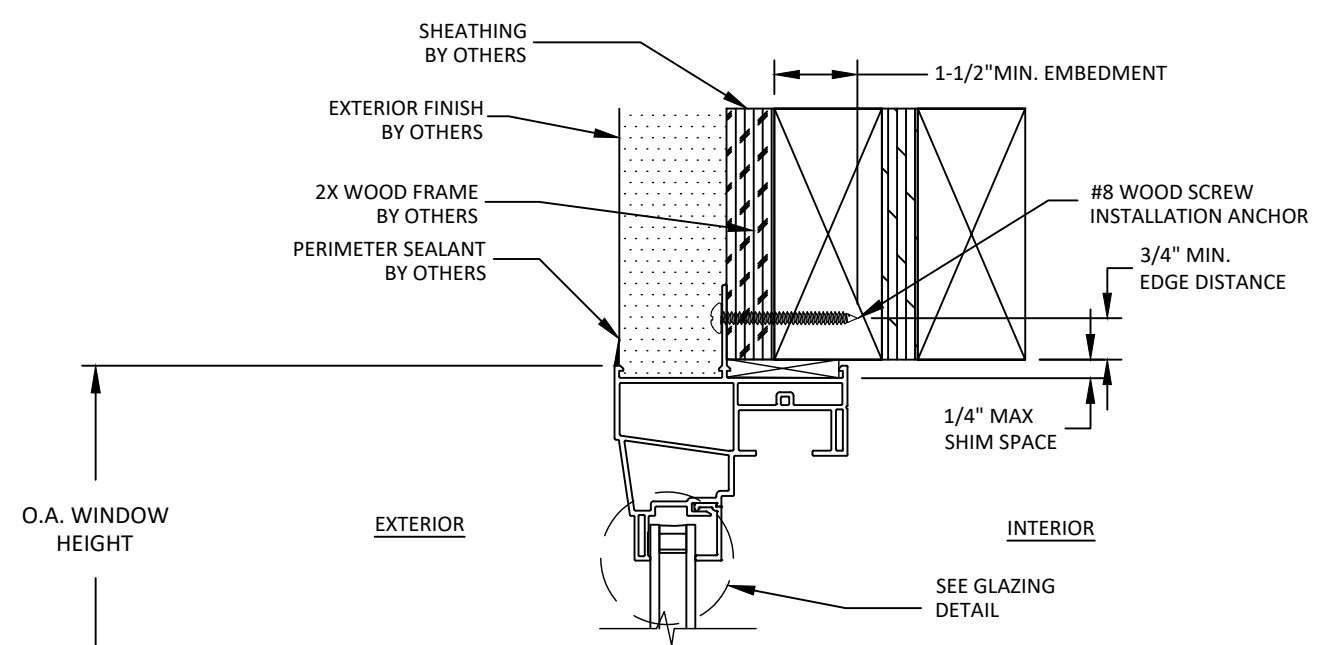
DWG. #: **CRF016**

SHEET

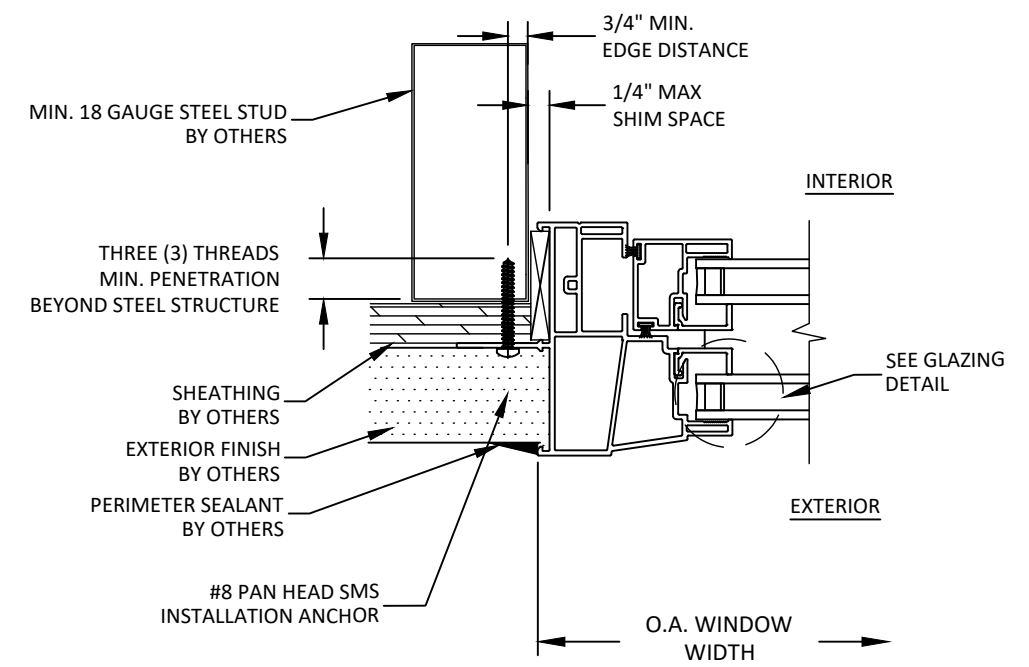
**2**

OF 3

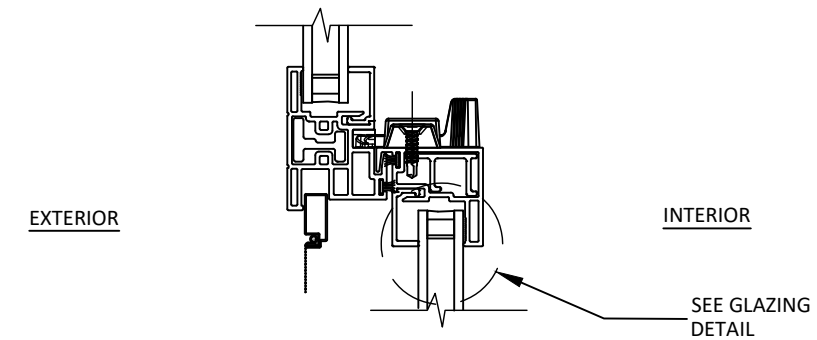
1/4/2024 5:42 PM  
 z:\projects\crof\lbc-23-1126-fbc-submittal-nami update\dwg\16153\crf016 fbc23.dwg



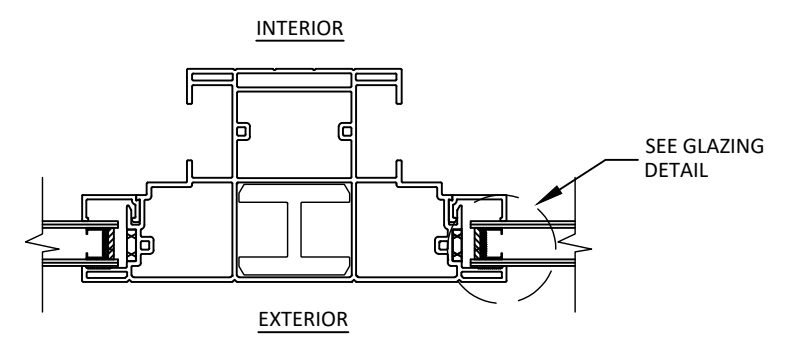
**A**  
3  
**VERTICAL SECTION**  
 HEAD - 2X WOOD SUBSTRATE  
 FIN FRAME



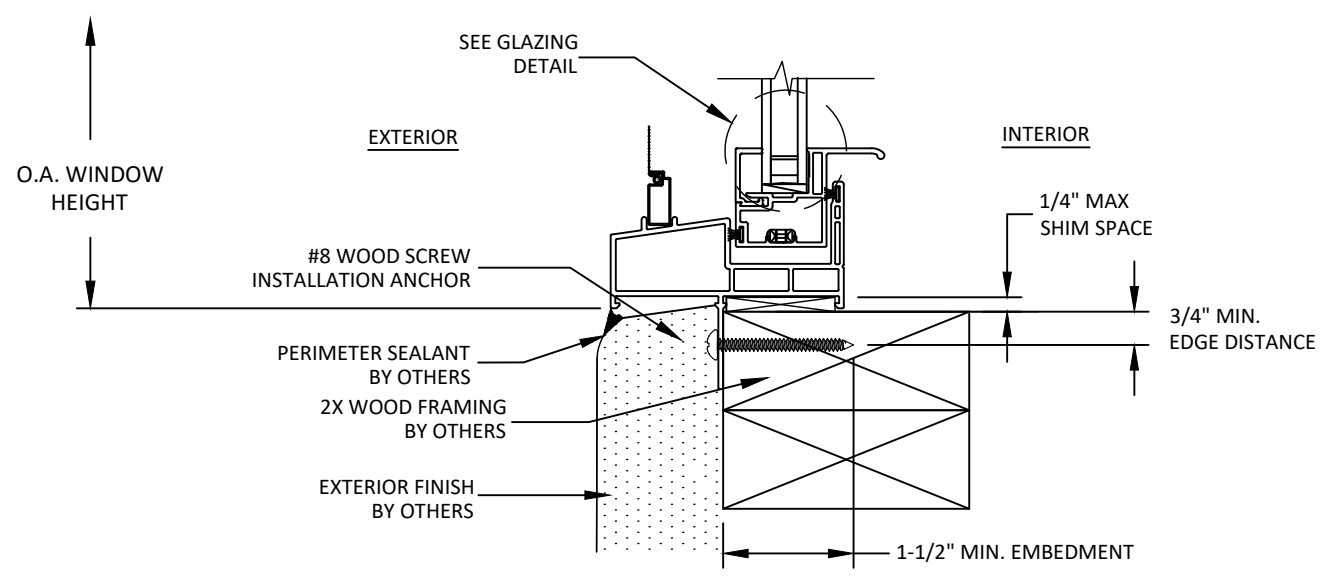
**D**  
3  
**HORIZONTAL SECTION**  
 JAMB - STEEL STUD SUBSTRATE  
 FIN FRAME



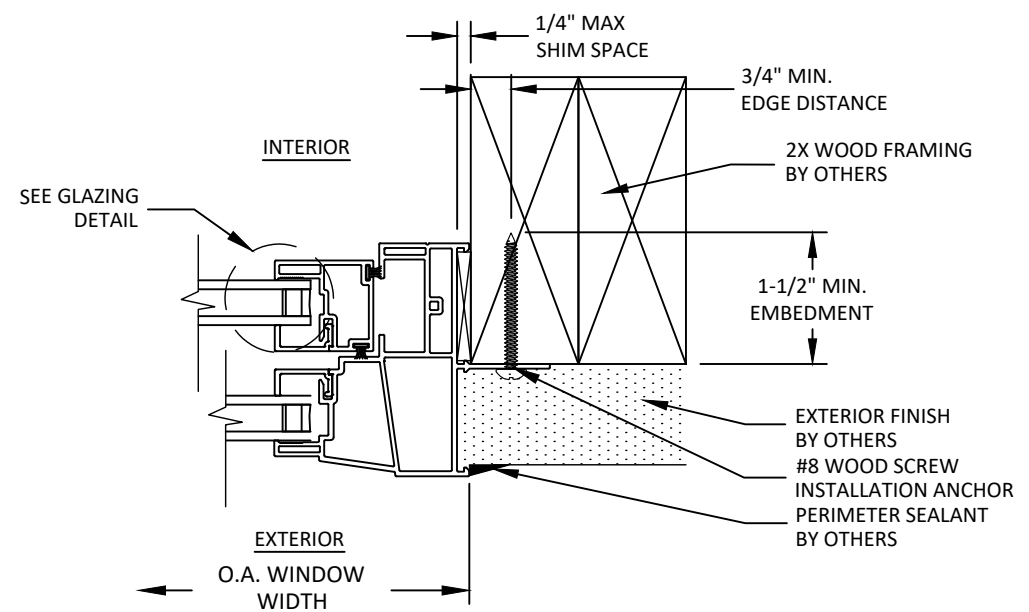
**B**  
3  
**VERTICAL SECTION**  
 MEETING RAIL



**E**  
3  
**HORIZONTAL SECTION**  
 INTEGRAL MULLION DETAIL



**C**  
3  
**VERTICAL SECTION**  
 SILL - WOOD SUBSTRATE  
 FIN FRAME



**F**  
3  
**HORIZONTAL SECTION**  
 JAMB - WOOD SUBSTRATE  
 FIN FRAME

**CROFT**  
 Est. 1920  
 1800 NORTH CLARK AVE.  
 MAGNOLIA, MS 39652  
 PH.: 601-684-6121 FX: 601-783-3188

TITLE: **SERIES 50W SINGLE HUNG WINDOW (NON-HVHZ) (NON-IMPACT)**  
 HORIZONTAL & VERTICAL SECTIONS

PREPARED BY: **BUILDING DROPS, INC.**  
 1900 NE MIAMI CT UNIT 2-15  
 MIAMI, FL 33132  
 PH: (954) 399-8478  
 FAX: (954) 744-4738  
 WEB: www.buildingdrops.com

REMARKS	BY	DATE
NEW CERTIFICATES	LL	8/21

THE INSTALLATION DETAILS DESCRIBED HEREIN ARE GENERIC AND MAY NOT REFLECT ACTUAL CONDITIONS FOR A SPECIFIC SITE. IF SITE CONDITIONS CAUSE INSTALLATION TO DEVIATE FROM THE REQUIREMENTS DETAILED HEREIN, A LICENSED ENGINEER OR ARCHITECT SHALL PREPARE SITE SPECIFIC DOCUMENTS FOR USE WITH THIS DOCUMENT.

**HERMES F. NORERO**  
 LICENSE  
 No. 73778  
 STATE OF  
 FLORIDA  
 PROFESSIONAL ENGINEER

HERMES F. NORERO, P.E.  
 FLORIDA P.E. No. 73778  
 BUILDING DROPS, INC.  
 1900 NE MIAMI CT UNIT 2-15  
 MIAMI, FL 33132  
 FBPE CERT. OF AUTHORIZATION No. 29578

FL #: **FL16153**

DATE: **07.23.15**

DWG. BY: <b>BB</b>	CHK. BY: <b>HFN</b>
--------------------	---------------------

SCALE: **NTS**

DWG. #: **CRF016**